



MECHANICS

GSL SERVICE Concorezzo (MB)

CONTACT DETAILS AND INFORMATION

Name	GSL Service Fonderia
Address	Via Pascoli, 13 - 20863 Concorezzo (MB)
Tel (Export manager)	+39 039 2848636
Fax (Export manager)	+39 039 2025821
Mail (Export manager)	info@gslexport.it
Employee	A >100 B 20-100 C <20
Associated	A/ B3 C15

Mechanical machining division

ORGANIZATION

Company Profile

The roots of GSL, GROUP SUBFOR LOMBARDY, go back to the 80's. At GSL we take our consolidated past experience as springboard for the future because we believe that, in order to plan the future, we first have to draw experience from our past. Over the years GSL SERVICE has drawn the best from past experience and Know-how. We fully understand the meaning of being a key player in subcontracting today. Competence, competitiveness and full service are requirements one shall always keep in mind if the goal is the complete customer satisfaction.

The companies in our group must undergo a strict screening done by a qualified technical board. Those who pass it are then split in three ranges according to competence. As result, we work with a pool of companies operating with state-of-the-art technology and an uniform production process.





MECHANICS

GSL SERVICE Concorezzo (MB)

COMPANY POLICY

The company policy consists in the research and selection of homogenous groups of production companies with the aim to create proper specialized production divisions, disciplined by technical specifications abbreviated with "G", which stands for process Guarantee. Our goal is to provide our customers with the best service, which we try to reconcile with the best price.

PRODUCTION

Turning

- CNC horizontal lathes until to 10 spindles for medium and big batches. Diameter: up to 5 mm to 1000mm
- Robotized workstations
- Vertical self loading turning machines. Diameter: up to 20mm to 850mm
- CNC vertical lathes. Diameter: up to 1000mm to 3500 mm

Milling

- CNC vertical milling machines for medium and large batches. Up to 3 until to 5 spindles.
- Horizontal machining centre: working cylinder 2000/2100 mm high and FMS
- Milling and CNC boring machines for different dimensions:
 - x up to 2000 to 20000mm length. 3 to 6 spindle
 - y up to 3000mm
 - Z up to 2000 + 1500mm

Drilling

- CNC drilling machines up to 20000mm length
Hole diameter 270mm

Toothing

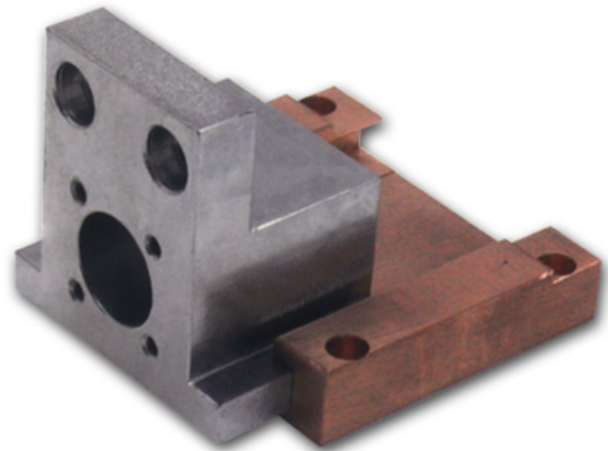
- CNC machines for straight and inclined toothing

Broaching

- Broaching up to diameter 200mm

Grinding

- CNC machines for external grinding. Diameter: up to 5 to 300mm.
- CNC machines for internal grinding. Diameter: up to 2 to 250mm.
- CNC grinding machines for inclined spindles
- CNC grinding machines for tooth



MATERIALS

- High speed machining steel
- Stainless steel, alloys steel
- Messing
- Copper
- Bronze
- Iron
- Aluminum alloy
- Cast iron
- Plastic (Plexiglass, Derlin, Teflon)

QUALITY CONTROL

- 3D CNC control machines complete with automatic head and tool change.
- CNC rounding equipments
- Roughness measurement instruments
- Profile Projectors
- Calibration equipments according to SIPS norm
- Calibration Machines SIPS

